

ASSEMBLY & INSTALLATION NOTES

JUBU Drysump pump belt adjustment (JU00226PRD)

for 2GR-FE

Please follow the instructions in this manual for a proper adjustment of the JUBU Drysump pump belt for 2GR-FE.

1. ASSEMBLY & INSTALLATION NOTES

Level of difficulty: **Complex**

Required time: **1h - 3h** (depends on available tools & skills)

1. If the drysump-pump belt can be rotated more than 90° the belt must be tightened, as this might damage the belt or cause it to slip off the pulley.
2. For tightening the belt the M6x85 head cap screws are loosened and 0.5mm drysump-pump shims are used below the pump to distance the pump from the engine, until the belt has the correct tension.

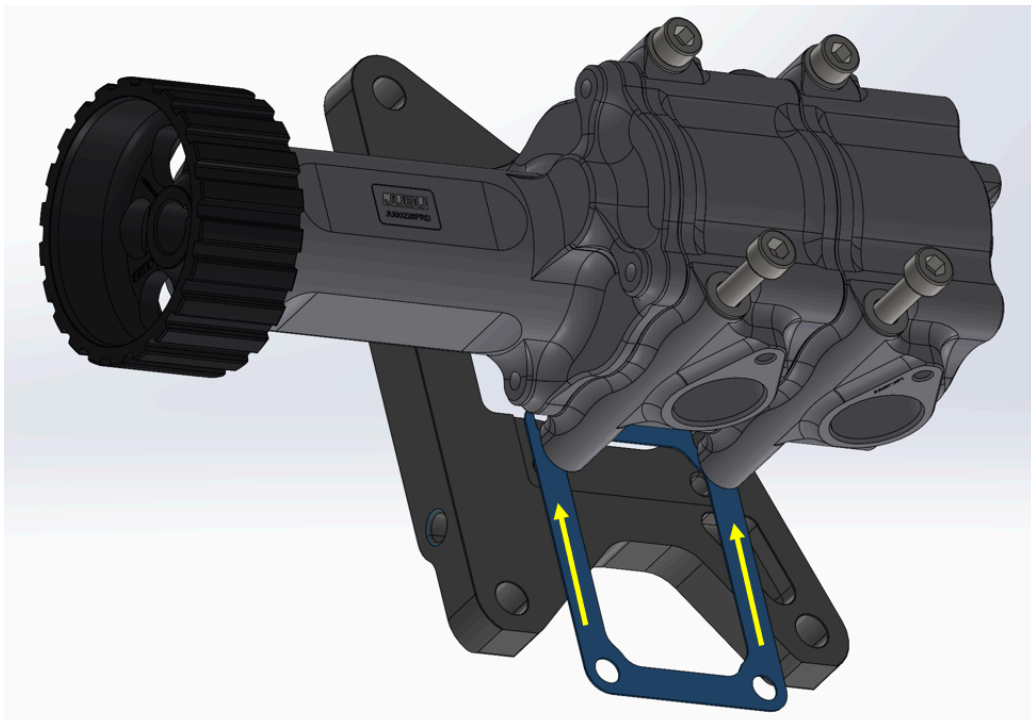


Fig 1: Add shims below the drysump pump I

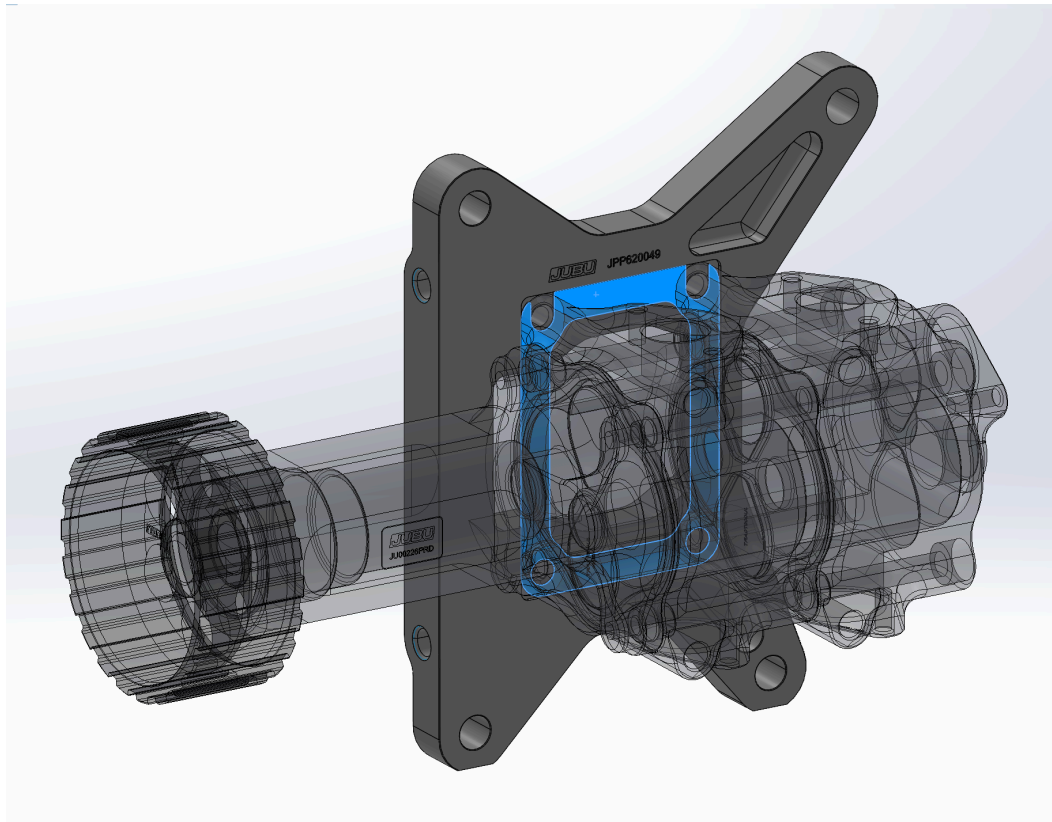


Fig 2: Add shims below the drysump pump II

! **NOTE:** If the belt can be rotated less than 90°, the tension of the belt is too high. This can lead to damage on the belt and on the bearings in the pump.

3. Tighten the M6x85 head cap screws with 10 Nm and secure them with LOCTITE 243.
4. After a test drive double-check the tension of the drysump-pump belt.

! **NOTE:** The tension of the belt should be checked 4-5 times during a road car season. For racing and trackday cars the belt must be checked before each event!

! **NOTE:** Do the belt test only at hot engine condition!

If you have any questions or need additional information, please contact us by email:

info@jubu-performance.com

JUBU Performance GmbH

Saxenegg 3a, 4323 Münzbach, AUSTRIA