

ASSEMBLY & INSTALLATION NOTES

JUBU Upgrade Toe link (JU00101PRD)

for Evora & Emira

Please follow the instructions in this manual for a proper assembly & installation of the JUBU Upgrade Toe link for Evora & Emira.

Please find in this document:

1. PART LIST
2. ASSEMBLY & INSTALLATION NOTES

1. PART LIST

#	ITEM	ART-NO.	UNITS
1	Adjustment pin	JU00140ART	2
2	Adjustment sleeve 1	JU00111ART	2
3	Adjustment sleeve 2	JU00139ART	2
4	Nut DIN 439 M14x1.5	-	6
5	Nut Din 439 M14x1.5 LH	-	2
6	Unibal Ø14	-	4
7	Unibal Ø14 cover	-	4
8	Rod end spacer	JU00112ART	8
9	Washer for wheel carrier side	JU00142ART	4
10	Washer for subframe side	JU00143ART	4
11	Socket head cap screw DIN912 10.9 M12x90	-	2
12	Socket head cap screw DIN912 10.9 M12x80	-	2
13	M12 K-nut	-	4

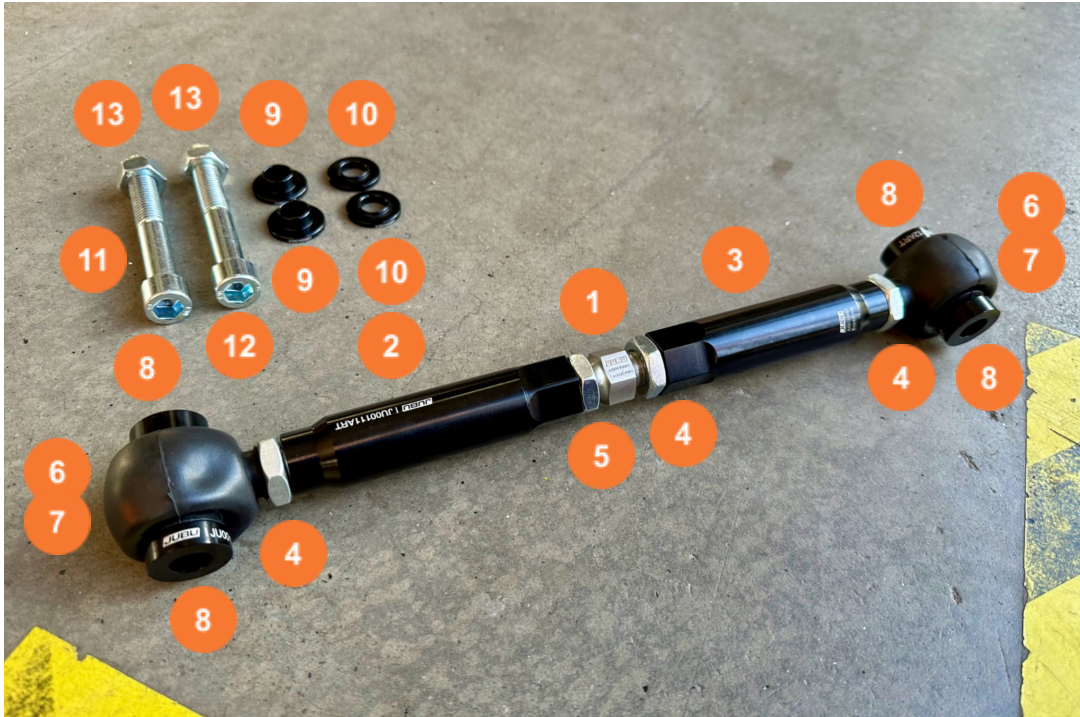


Fig 1: Scope of delivery 1 side (I)

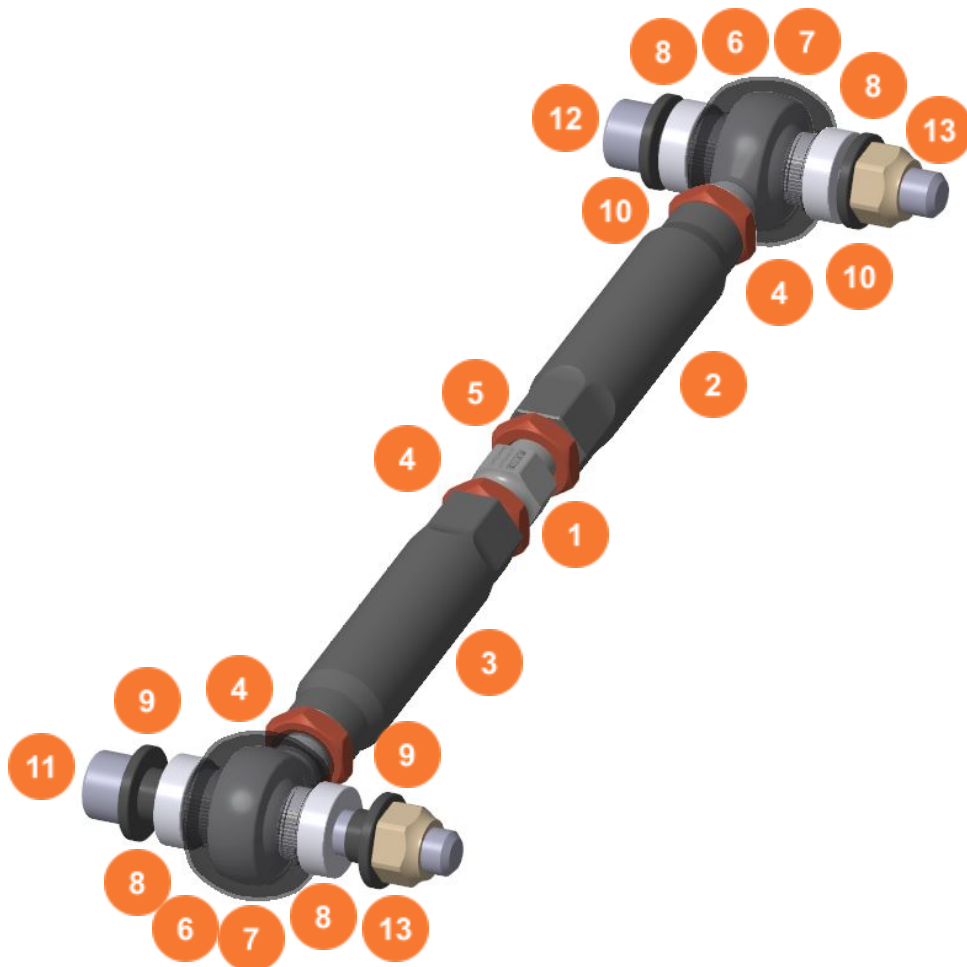


Fig 2: Scope of delivery 1 side (II)

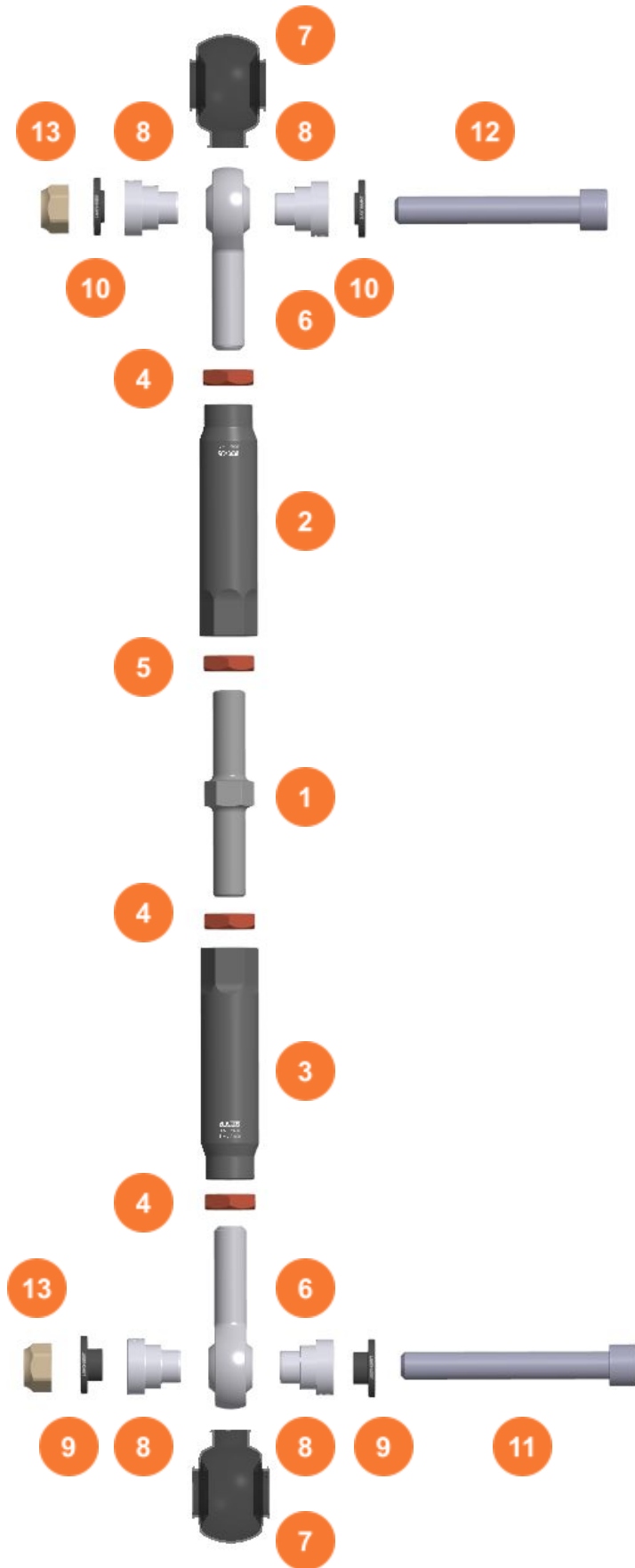






Fig 3: Exploded view

2. ASSEMBLY & INSTALLATION NOTES

1. Uninstall the OEM toe link.
2. Adjust the length of the JUBU upgrade toe link to OEM length (Evora approx. 295mm, Emira approx. 300mm) using the adjustment pin. (1)

 **NOTE:** If you can not reach the required length of your JUBU toe-links, make sure that the adjustment sleeves (2) (3) are fully screwed in the adjustment pin (1). The length can also be adjusted by screwing the Ø14 unibals further in or out.

 **NOTE:** The minimum length of the JUBU toe-link is 288mm and the maximum length is 310mm.

3. The adjustment pin is provisionally fixed by tightening the M14x1.5 nut (4) and the M14x1.5 LH nut (5).
4. Take the pre-assembled upgrade toe link and mount them to the subframe with the M12x80 head cap screw (12), 2x washers for the subframe (10) and 1x M12 K-nut (13) which is tightened with 120Nm.  **NOTE:** To reach the correct torque the flange of the K-nut must be greased.
5. Outboard use the M12x90 head cap screw (11), 2x washers for the upright (9) and 1x M12 K-nut (13) which is tightened with 120Nm.  **NOTE:** To reach the correct torque the flange of the K-nut must be greased.
6. The toe can be adjusted by rotating the adjustment pin (1) until the toe is correct don't forget to fix and tighten the M14x1.5 nut (4) and the M14x1.5 LH nut (5) with 50Nm each.

 **NOTE: Doublecheck that all nuts and bolts are correctly tightened!**



Fig. 4: Fixing the upgrade JUBU toe link on the upright



Fig. 5: Assembled upgrade JUBU toe link

If you have any questions or need additional information, please contact us by email:

info@jubu-performance.com

JUBU Performance GmbH

Saxenegg 3a, 4323 Münzbach, AUSTRIA