

## ASSEMBLY & INSTALLATION NOTES

# JUBU Cold air intake (JU00231PRD)

for Elise S3

**Please follow the instructions in this manual for a proper assembly & installation of the JUBU Cold Air Intake for Elise S3.**

*Please find in this document:*

- 1. PART LIST**
- 2. ASSEMBLY & INSTALLATION NOTES**

## 1. PART LIST

#	ITEM	ART-NO.	UNITS
1	Upgrade intake snorkel Elise S3	JU00990ART	1
2	Cutting template Elise S3	JU01046ART	1
3	Support bracket	JU01047ART	1
4	K&N air filter	LO00577	1
5	DIN 7380-2 M4x12 Lens head screw	-	4
6	DIN 985 M4 self locking nut	-	4
7	DIN 125 M4 washer	-	4
8	Bodywork adhesive	VM00081	1

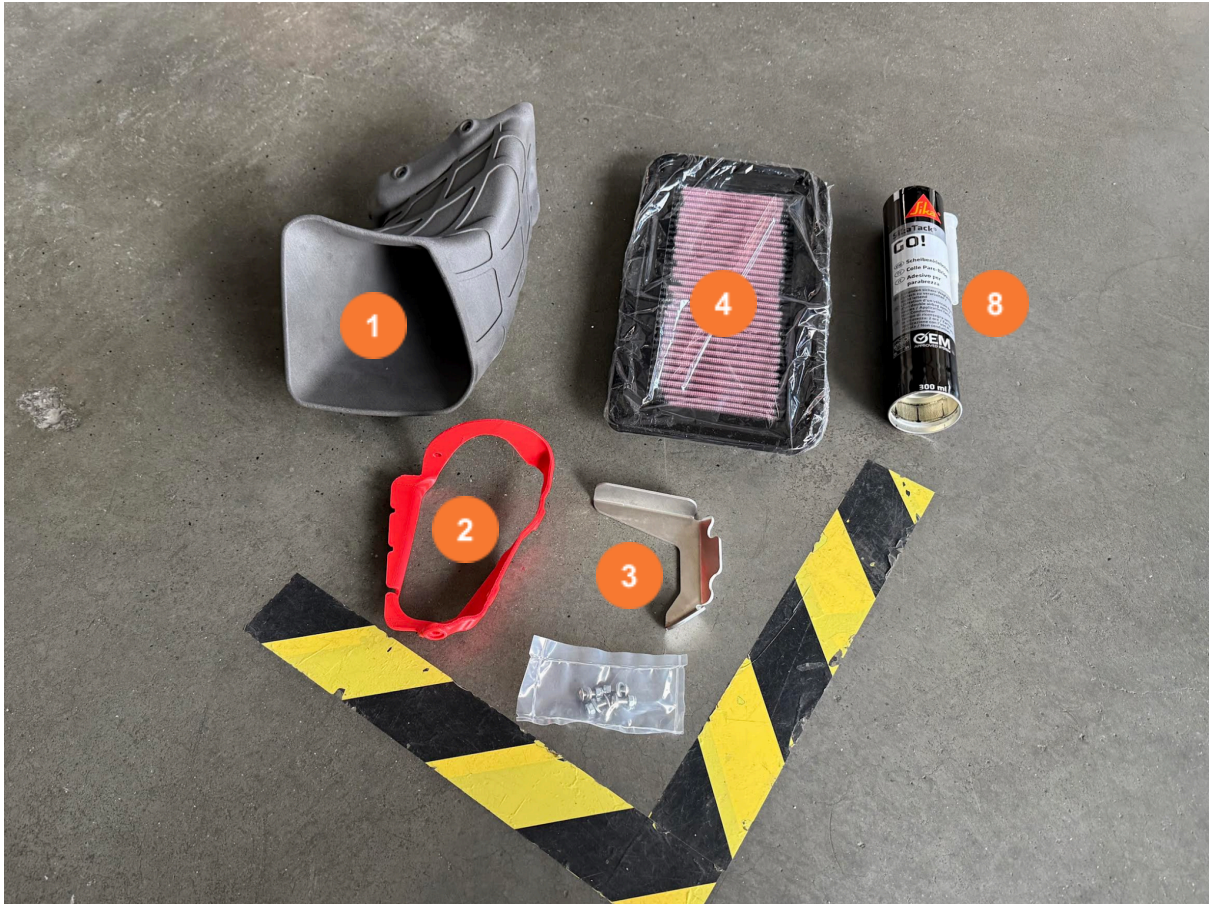


Fig 1: Scope of delivery

## 2. ASSEMBLY & INSTALLATION NOTES

Level of difficulty: **MEDIUM**

Required time: **2h - 4h** (depends on experience, available tools & skills)

1. Uninstall the OEM Airbox.
2. Glue the support bracket (3) on the OEM bracket with bodywork adhesive (8) as shown in Fig 2.

**⚠ NOTE:** The bodywork adhesive (8) needs at least 90 minutes curing time.



Fig 2: Reinforcing the OEM bracket

3. The OEM Airbox is cut and drilled (4,5mm holes) according to the cutting template (2).

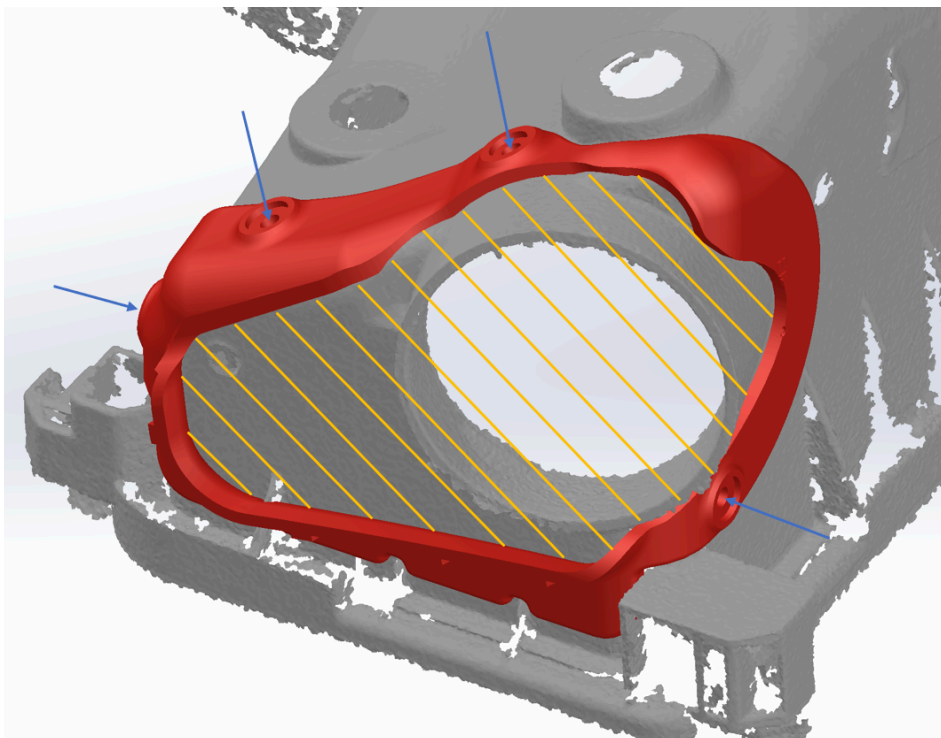



Fig 3: Cutting and drilling the OEM Airbox (1)



4. Glue the upgrade intake snorkel (1) on the OEM Airbox with bodywork adhesive (8) and fix it using 4x M4x12 lenshead screws (5), 4x M4 self locking nuts (6) and 4x M4 washers (7) which are tightened with 3Nm.

 **NOTE:** The bodywork adhesive (8) needs at least 90 minutes curing time.

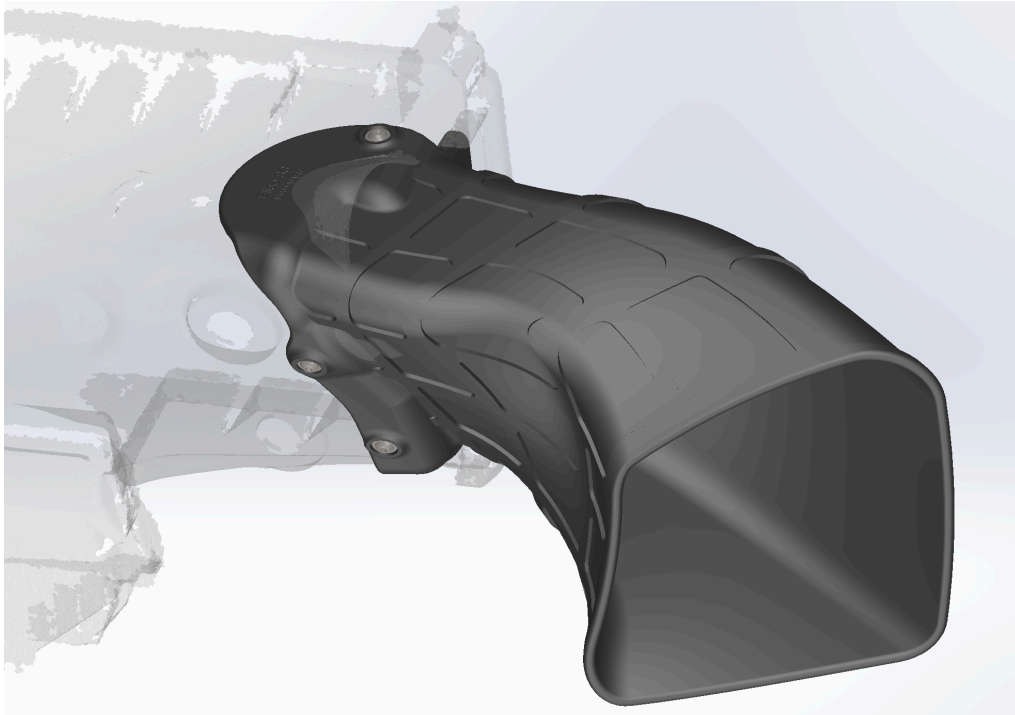



Fig 4: Installing the upgrade intake snorkel (1)

5. The Airbox can be re-assembled into the engine bay by using the K&N air filter (4).

 **NOTE:** Depending on the assembly situation and year of manufacture the upgrade intake snorkel (1) might slightly collide with the corner/edge of the bodywork. If this is the case, please trim the corner/edge.



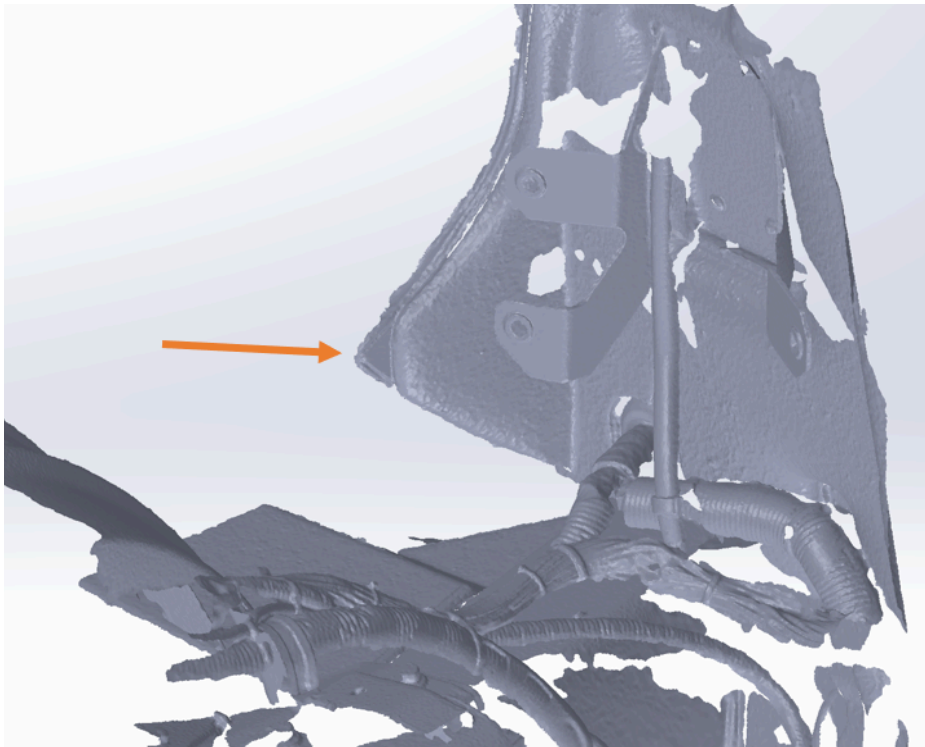


Fig 4: If necessary trim the edge

\*\*\*\*\*

If you have any questions or need additional information, please contact us by email:

[info@jubu-performance.com](mailto:info@jubu-performance.com)

**JUBU Performance GmbH**

Saxenegg 3a, 4323 Münzbach, AUSTRIA